

Mini 1550nm Erbium-Doped Fiber Amplifier(EYDFA)

EYDFA-MINI Series



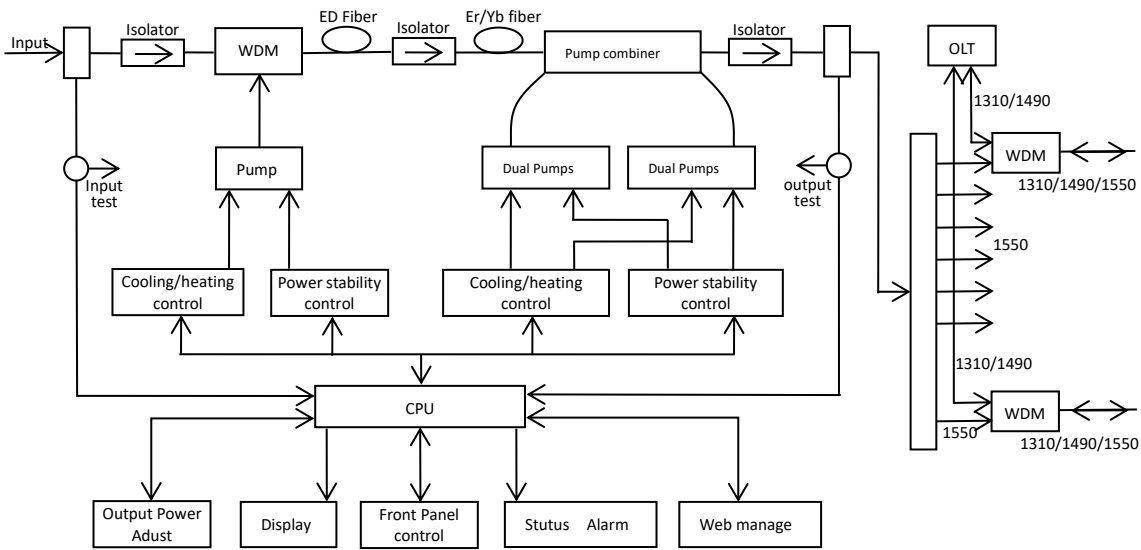
Product Description

EYDFA-MINI CATV erbium-doped fiber amplifier mini device which designed according to the communication level standard, It is mainly used for television image signals, digital TV, telephone voice signal and the signal of the data (or compressed data) optical fiber transmission over long distance. technology design pays attention to the product's cost, chose to build a large and medium-sized 1550nm catv optical fiber transmission network economical transmission device.

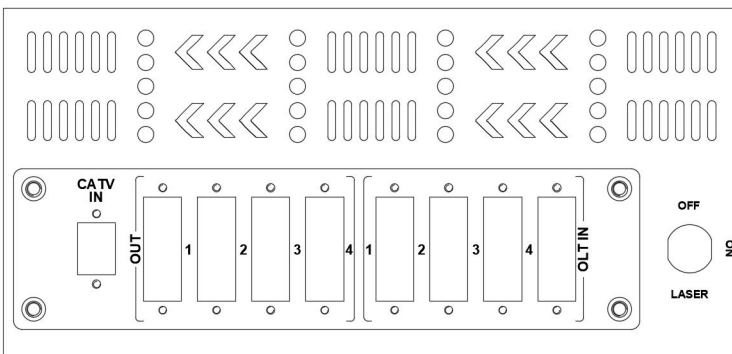
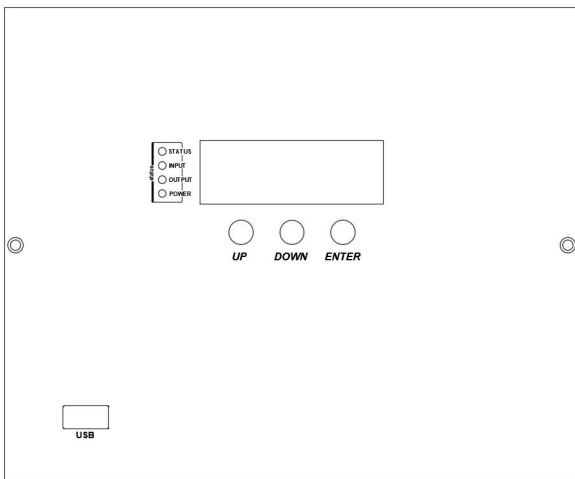
Product Features

- * Output adjustable by buttons in the front panel or , the range is 0~5dBm.
- * Maintenance function of one-time downward attenuation of 6dBm by buttons in the front panel, to facilitate the optical fiber hot-plug operation without turn off The device.
- * Multi-ports output, can built in 1310/1490/1550WDM.
- * USB port facilitates device upgrade.
- * The laser turn on/off by locks keys in the front panel.
- * Adopts JDSU or Oclaro Pump laser.
- * Led displays the working condition of the machine.
- * Dual power hot-plug power supply for choice, 110V,220V AC.

Diagram



Front Panel



◀LED display:

Displays the working parameter of the machine.

◀ACTIVITY Indication light:

Green: Normal Condition.
Red: No input or abnormal condition.

◀INPUT Indication light:

Green: Normal.

◀OUTPUT Indication light:

Green: Normal.

◀POWER Indication light:

Green: Power Connected .

◀Key:

ON: Turn on the laser.
OFF: Turn off the laser .

◀USB:

Upgrade equipment or serial communication.



- >Support 4/8ports
- >1550nm SC/APC input
- >OLT SC/UPC input (SC/APC can be customized)
- >Combine out SC/APC



- > With 4*fans for food heat dissipation
- >Single power supply(dual power supply can be customizmied)

Specification Information

Items	Parameter									
Output (dBm)	31	32	33	34	35	36	37	38	39	40
Output (mW)	1250	1600	2000	2500	3200	4000	5000	6400	8000	10000
Input (dBm)	-3 ~ +10									
Range or output adjustment (dBm)	5									
Wavelength (nm)	1540 ~ 1565									
Output stability (dB)	<±0.3									
Optical return loss (dB)	≧45									
Fiber connector	FC/APC, SC/APC, SC/UPC, LC/APC, LC/UPC									
Noise figure (dB)	<6.0 (input 0dBm)									
Connector type	RJ45, USB									
Power consumption (W)	≤80									
Voltage (V)	110VAC, 220VAC									
Working temp (°C)	0 ~ 55									
Size (mm)	260(L)x186(W)x89(H)									
NW (Kg)	3.8									